

Cinema rental?

information & prices

Kino Movimiento

Colosseum Filmtheater

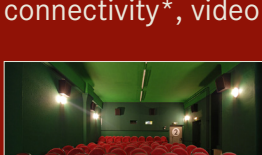
Kino Toni

Kino Central

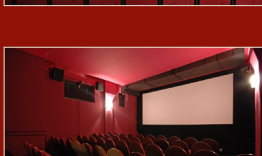
info & booking

030.40 98 23 63

Movimiento
Kottbusser Damm 22.
10967 Berlin
Kreuzberg
www.movimiento.de



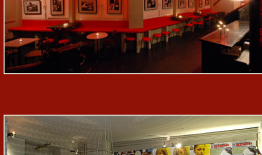
Movimiento 1
104 seats
35mm, digital D-Cinema,
digital E-Cinema,
4 wired microphones,
wireless microphones*, in-room laptop
connectivity*, video conferencing*



Movimiento 2
67 seats
35mm, digital D-Cinema,
digital E-Cinema
video conferencing*



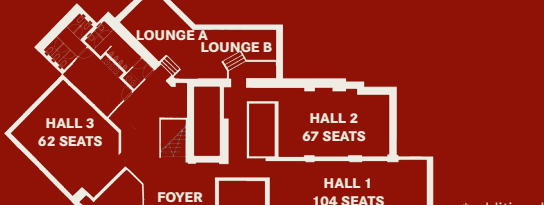
Movimiento 3
62 seats
35mm, digital D-Cinema,
digital E-Cinema,
video conferencing*



Lounge
30 seats & 80 standing
espresso machine, contact
grill, stove, oven, hot food
showcase, sausage warmer



Foyer
15 seats & 25-40 standing
espresso machine



*additional service

Colosseum
Schönhauser Allee 123
10437 Berlin
Prenzlauer Berg
colosseumberlin.de

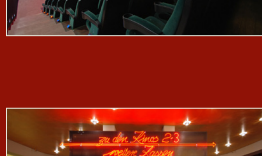
S & U Schönhauser Allee
Weinmeister Str.
Kottbusser Str.
Kreuzberg Str.



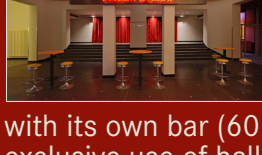
Colosseum 1
525 seats
stage 15m x 1,50m
digital D-Cinema
4 wireless microphones,
conference equipment can be booked individually*



Colosseum 2
161 seats
digital D-Cinema,
2 wireless microphones,
conference equipment can be
booked individually*

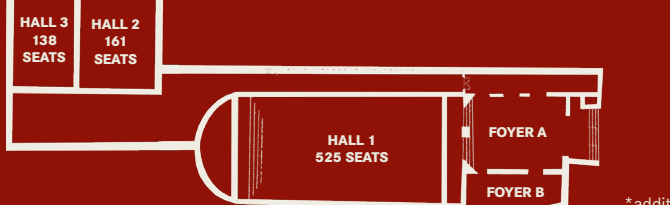


Colosseum 3
138 seats
digital D-Cinema, ,
2 wireless microphones,
conference equipment can be
booked individually*



Foyer
80 seats & 500 standing
espresso machine
can be separated for
exclusive use of foyer B

with its own bar (60 seats, 200 standing) or for
exclusive use of hall 1 plus foyer A & B, with its own
bar and counter (80 seats, 400-500 standing)



*additional service

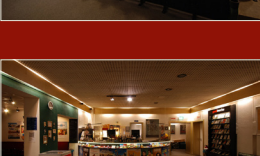
Toni
Antonplatz 1
13086 Berlin
Weißensee
www.kino-toni.de



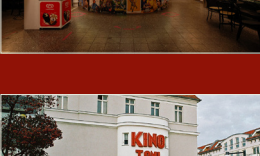
Toni
259 seats
**138 on the orchestra
level & 121 in the balcony**
stage 10m x 2,50m
digital D-Cinema, 4 wired microphones, wireless
microphones*, in-room laptop connectivity*, video
conferencing*



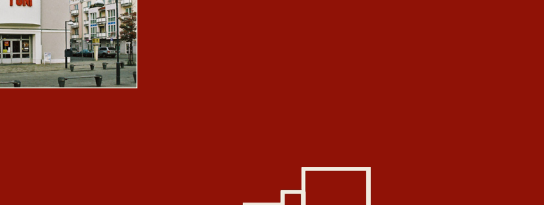
Tonino
74 seats
digital D-Cinema



Foyer
30 seats & 150-200 standing
espresso machine

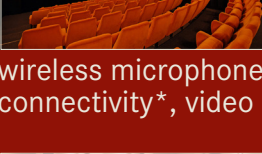


Outdoor space



*additional service

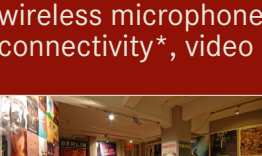
Central
Rosenthaler Straße 39
10178 Berlin
Mitte
www.kino-central.de



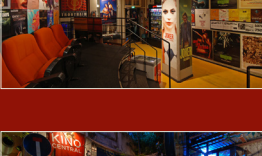
Central 1
96 seats
digital D-Cinema,
digital E-Cinema,
4 wired microphones,
wireless microphones*, in-room laptop
connectivity*, video conferencing*



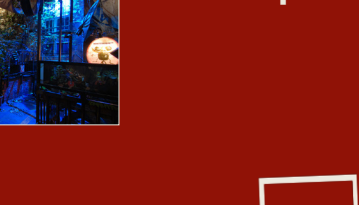
Central 2
76 seats
digital E-Cinema,
digital D-Cinema,
4 wired microphones,
wireless microphones*, in-room laptop
connectivity*, video conferencing*



Foyer & Terrace
20 seats & 25-40 standing
espresso machine



Outdoor space



*additional service

Movimiento

| price list | | | |
|---|---------------------|---------------------|---------------------|
| per slot - room usage up to 120 min, indicated times are start times prices for full or half days excluded | | | |
| Movimiento | hall 1 | hall 2 | hall 3 |
| Mo-Fr until 15.45 | 390 327,73 net | 360 302,52 net | 330 277,31 net |
| So-Th from 16.00 | 780 655,46 net | 540 453,78 net | 480 403,36 net |
| Sa-Su until 15.45 | | | |
| Fr-Sa from 16.00 | 2400 2016,81 net | 1650 1386,55 net | 1500 1260,50 net |
| Mo - Fr (½ day) 8.00 - 17.30 | 900 756,30 net | 800 672,27 net | 700 588,24 net |
| Mo-Th (½ day) 15.00 - 0:30 | 1600 1344,54 net | 1200 1008,40 net | 1000 840,34 net |
| Mo-Th (1 day) 8.00 - 2:30 | 2000 1680,67 net | 1500 1260,50 net | 1300 1092,44 net |
| Fr - Su (1 day) 8.00 - 2:30 | 7200 6050,42 net | 5000 4201,68 net | 4500 3781,51 net |

| reduced price list for film makers & film events | | | |
|--|---------------------|-------------------|-------------------|
| per slot - hall usage up to 120 min, indicated times are start times | | | |
| Movimiento | hall 1 | hall 2 | hall 3 |
| Mo-Fr until 15.45 | 200 168,07 net | 190 159,66 net | 180 151,26 net |
| So-Th from 16.00 | 400 336,13 net | 320 268,91 net | 300 252,10 net |
| Sa-Su until 15.45 | | | |
| Fr-Sa from 16.00 | 1300 1092,44 net | 860 722,69 net | 800 672,27 net |

| reduced price list for film students | | | |
|--|-------------------|-------------------|-------------------|
| per slot - hall usage up to 120 min, indicated times are start times | | | |
| Movimiento | hall 1 | hall 2 | hall 3 |
| Mo-Fr until 15.45 | 130 109,24 net | 120 100,84 net | 110 92,44 net |
| So-Th from 16.00 | 260 218,49 net | 180 151,26 net | 160 134,45 net |
| Sa-Su until 15.45 | | | |
| Fr-Sa from 16.00 | 800 672,27 net | 550 462,18 net | 500 420,17 net |

Colosseum

| price list | | | |
|---|-----------------------|----------------------|---------------------|
| per slot - room usage up to 120 min, indicated times are start times prices for full or half days excluded | | | |
| Colosseum | hall 1 | hall 2 | hall 3 |
| Mo-Fr until 15.45 | 600 504,20 net | 450 378,15 net | 400 336,13 net |
| So-Th from 16.00 | 1.500 1260,50 net | 700 588,24 net | 650 546,22 net |
| Sa-Su until 15.45 | | | |
| Fr-Sa from 16.00 | 4200 3529,41 net | 2.000 1690,67 net | 1750 1260,50 net |
| Mo - Fr (½ day) 8.00 - 17.30 | 1.800 1512,61 net | 1.350 1134,12 net | 1200 1008,40 net |
| Mo-Th (½ day) 15.00 - 0:30 | 3500 2941,18 net | 1800 1512,61 net | 1600 1344,54 net |
| Mo-Th (1 day) 8.00 - 2:30 | 4500 3781,51 net | 2100 1764,71 net | 1950 1638,66 net |
| Fr - Su (1 day) 8.00 - 2:30 | 12600 10588,24 net | 6000 5042,02 net | 5250 4411,76 net |

| reduced price list for film makers & film events | | | |
|--|---------------------|---------------------|---------------------|
| per slot - hall usage up to 120 min, indicated times are start times | | | |
| Colosseum | hall 1 | hall 2 | hall 3 |
| Mo-Fr until 15.45 | 500 420,17 net | 350 294,12 net | 300 252,10 net |
| So-Th from 16.00 | 1000 840,34 net | 500 420,17 net | 450 378,15 net |
| Sa-Su until 15.45 | | | |
| Fr-Sa from 16.00 | 3000 2521,01 net | 1750 1470,59 net | 1500 1260,50 net |

| reduced price list for film students | | | |
|--|---------------------|---------------------|---------------------|
| per slot - hall usage up to 120 min, indicated times are start times | | | |
| Colosseum | hall 1 | hall 2 | hall 3 |
| Mo-Fr until 15.45 | 400 336,13 net | 270 226,89 net | 250 210,08 net |
| So-Th from 16.00 | 800 672,27 net | 400 336,13 net | 375 315,13 net |
| Sa-Su until 15.45 | | | |
| Fr-Sa from 16.00 | 2500 2100,84 net | 1350 1134,45 net | 1250 1050,42 net |

Toni

| price list | | | |
|---|----------------------|---------------------|--|
| per slot - room usage up to 120 min, indicated times are start times prices for full or half days excluded | | | |
| Toni | hall 1 | hall 2 | |
| Mo-Fr until 11.45 | 400 336,13 net | 200 168,07 net | |
| So-Th from 12.00 | 1000 840,34 net | 400 336,13 net | |
| Sa-So until 11.45 | | | |
| Fr-Sa from 12.00 | 3500 2941,18 net | 1200 1008,40 net | |
| Mo - Fr (½ day) 8.00 - 17.30 | 1200 1008,40 net | 600 504,20 net | |
| Mo-Th (½ day) 15.00 - 0:30 | 2200 1848,74 net | 900 756,30 net | |
| Mo-Th (1 day) 8.00 - 2:30 | 3000 2521,01 net | 1200 1008,40 net | |
| Fr - So (1 day) 8.00 - 2:30 | 10500 8823,53 net | 3600 3025,21 net | |

| reduced price list for film makers & film events | | | |
|--|---------------------|-------------------|--|
| per slot - hall usage up to 120 min, indicated times are start times | | | |
| Toni | hall 1 | Saal 2 | |
| Mo-Fr until 11.45 | 350 294,12 net | 170 142,86 net | |
| So-Th from 12.00 | 750 630,25 net | 300 252,10 net | |
| Sa-So until 11.45 | | | |
| Fr-Sa from 12.00 | 1800 1512,61 net | 750 630,25 net | |

| reduced price list for film students | | | |
|--|---------------------|-------------------|--|
| per slot - hall usage up to 120 min, indicated times are start times | | | |
| Toni | hall 1 | hall 2 | |
| Mo-Fr until 11.45 | 250 210,08 net | 150 126,05 net | |
| So-Th from 12.00 | 500 420,17 net | 200 168,07 net | |
| Sa-So until 11.45 | | | |
| Fr-Sa from 12.00 | 1500 1260,50 net | 500 420,17 net | |

Central

| price list | | | |
|---|---------------------|---------------------|--|
| per slot - room usage up to 120 min, indicated times are start times prices for full or half days excluded | | | |
| Central | hall 1 | hall 2 | |
| Mo-Fr until 15.45 | 450 378,15 net | 400 336,13 net | |
| So-Th from 16.00 | 990 831,93 net | 800 672,27 net | |
| Sa-Su until 15.45 | | | |
| Fr-Sa from 16.00 | 2800 2352,94 net | 2300 1932,77 net | |
| Mo - Fr (½ day) 8.00 - 17.30 | 1000 840,34 net | 900 756,30 net | |
| Mo-Th (½ day) 15.00 - 0:30 | 2000 1680,67 net | 1700 1428,57 net | |
| Mo-Th (1 day) 8.00 - 2:30 | 2500 2100,84 net | 2000 1680,67 net | |
| Fr - Su (1 day) 8.00 - 2:30 | 8400 7058,82 net | 6900 5798,32 net | |

| reduced price list for film makers & film events | | | |
|--|---------------------|-------------------|--|
| per slot - hall usage up to 120 min, indicated times are start times | | | |
| Central | hall 1 | hall 2 | |
| Mo-Fr until 15.45 | 240 201,68 net | 200 168,07 net | |
| So-Th from 16.00 | 520 436,97 net | 400 336,13 net | |
| Sa-Su until 15.45 | | | |
| Fr-Sa from 16.00 | 1490 1252,10 net | 1190 1000 net | |

| reduced price list for film students | | | |
|--|-------------------|-------------------|--|
| per slot - hall usage up to 120 min, indicated times are start times | | | |
| Central | hall 1 | hall 2 | |
| Mo-Fr until 15.45 | 170 142,86 net | 150 126,05 net | |
| So-Th from 16.00 | 325 273,11 net | 220 184,87 net | |
| Sa-Su until 15.45 | | | |
| Fr-Sa from 16.00 | 950 798,32 net | 700 588,24 net | |

Prices

The prices apply to events with **hall usage for a slot of up to 120 minutes**. Additional time will be charged per started hour (half slot price). Prices for full or half days excluded. In this case, the price refers to the specified time period. The times indicated in the price list refer to the start time of the event. Included in the price:

- staff & technology
- up to 2 tests of the media for playability by us
- a subsequent short playback test (max. 2 min)

All further or longer test runs and additional services will be charged based on effort, but at a minimum of 50 Euro.

Admission

Admission is approximately 15 min before the start of the event.

Catering

A **champagne reception** or similar is possible free of charge. Drinks must be purchased from us. Food may be brought in upon agreement.

Cancellation

Free **cancellations** are possible up to 14 cancellations before the event day. After that, no cancellations are possible.

For bookings in halls 2 and 3: If it fits better with our programming, there is the possibility of moving the event to a larger hall, at no extra charge.

Additional services

Charged based on effort. The following price list applies to popular services:

Catering

- can be organized through us, based on effort

Ticket sales via cinema box office

- 30 Euro, at Colosseum 2,00 Euro extra per ticket

Corkage fee

For brought-in beverages, only by arrangement:

- € Euro for bottles over 0,5L
- € Euro for bottles up to 0,5L
- Special prices for spirits.

DCCP creation for playback at our venue

200 Euro

Late media delivery

20 Euro per day of delay

Decoration

- poster placement (> 2 posters): €00 Euro
- billboard at Central: €00 Euro
- monitor branding at Colosseum: €20 Euro
- hanging a banner over the main entrance (Colosseum): 700 Euro plus printing costs

Technology

- wireless microphones at Central, Toni, Movimiento: €00 Euro (incl. technician)
- video conferencing at Central, Toni, Movimiento: 100 Euro
- conference technology at Colosseum: based on effort

Technical requirements

D-Cinema

DCCP hard drive (CRU or USB)
download only through Sharc, Gofilex, Aspera
10 days prior to the event

Files up to 25 GB also through
wetransfer.com, gofile.io, or filemail.com
as a zipped folder

E-Cinema

Windows or Mac formatted hard drive (USB)
with a uniquely named file as the only content
on the medium, or for files up to 25 GB, download
exclusively through wetransfer.com, gofile.io, or
filemail.com

- codecs: exclusively mpeg2, mpeg4, h264
- audio: PCM or AC3 audio codec
- resolution: up to 2048 x 1080 pixels
- bitrate: up to 50 Mbit
- target size: maximum 5 GB per hour of runtime
- subtitles: should be burned into the image, external subtitle files are not playing

BluRay/DVD

as physical medium or as file

Other playback media can be used if a
player is brought or rented at an additional cost.
The following connections are available: HD-SDI,
DVI, HDMI, Component, RGB, Y/UV, S-Video, VGA.

Sound

Toni: digital & analog 5.1
Central, Movimiento, Colosseum: digital & analog
5.1 & 7.1

Playback media

The playback media must be delivered to the
cinema at least **10 days** before the event. Please
name your file clearly and save only this one file
on the media.

Please also provide the technical information
sheet and fill in the event date, film duration,
language version, subtitle version, email address,
and callback number. We will test the media for
playability. After a successful test, it is possible
for you to briefly preview the film (max. 2 min).
For this a date needs to be arranged.
For late media delivery, we will charge 20 Euro per
day.